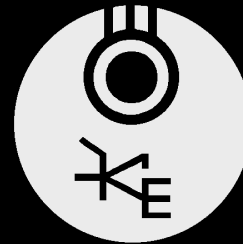


Міністерство освіти і науки України
Державний вищий навчальний заклад
“Національний гірничий університет”



КАФЕДРА ЕЛЕКТРОПРИВОДА

Кафедра електропривода

Авторизований навчальний центр “Schneider Electric”

Розробив: Яланський О.А., доцент кафедри електропривода

м. Дніпропетровськ

2008 - 2012

Vijeo Designer

Быстрый старт

Смена панелей (продолжение)

Создайте проект, содержащий две панели с надписями «Это 1-я панель» и «Это 2-я панель»

ChangePanel_2 - Vijeo-Frame - [Target1 - Panel1]


File Edit Build HMI Arrange Variable Report Search Tools Window Help

State: 0

Navigator

- ChangePanel_2
 - Target1
 - Graphical Panels
 - 1: Panel1
 - 2: Panel2
 - Application Scripts
 - Alarms
 - Popup Windows
 - Languages
 - Data Files
 - Recipes
 - IO Manager

Property Inspector

Graphical Panel	
Name	Panel1
PanelID	1
Description	
Width	320
Height	240
Back Color	 (0,0,0)
FunctionKeys	...

Graphics List

Order	Object Name	Posit
1	A Text01	40, 80

Toolchest

Toolchest

Эта 1-я панель

Панель 1 (1:Panel1)

Панель 2 (2:Panel2)

Feedback Zone

Build

For Help, press F1

ChangePanel_2 - Vijeo-Frame - [Target1 - Panel1]

File Edit Build HMI Arrange Variable Report Search Tools Window Help

Установка функциональных кнопок панели (Panel Function Key Setting)

Navigator

- ChangePanel_2
 - Target1
 - Graphical Panels
 - 1: Panel1
 - 2: Panel2
 - Application Scripts
 - Alarms
 - Popup Windows
 - Languages
 - Data Files
 - Recipes
 - IO Manager

Property Inspector

Graphical Panel	
Name	Panel1
PanelID	1
Description	
Width	320
Height	240
Back Color	(0,0,0)
FunctionKeys	

Panel Function Key Setting

Function Keys: R1

Function	Operation
----------	-----------

Add Insert Delete Delete All

Option

- ☐ Enable Interlock
- ☐ Target Interlock:
- ☐ Buzzer On Touch

OK Cancel Help

Graphics List

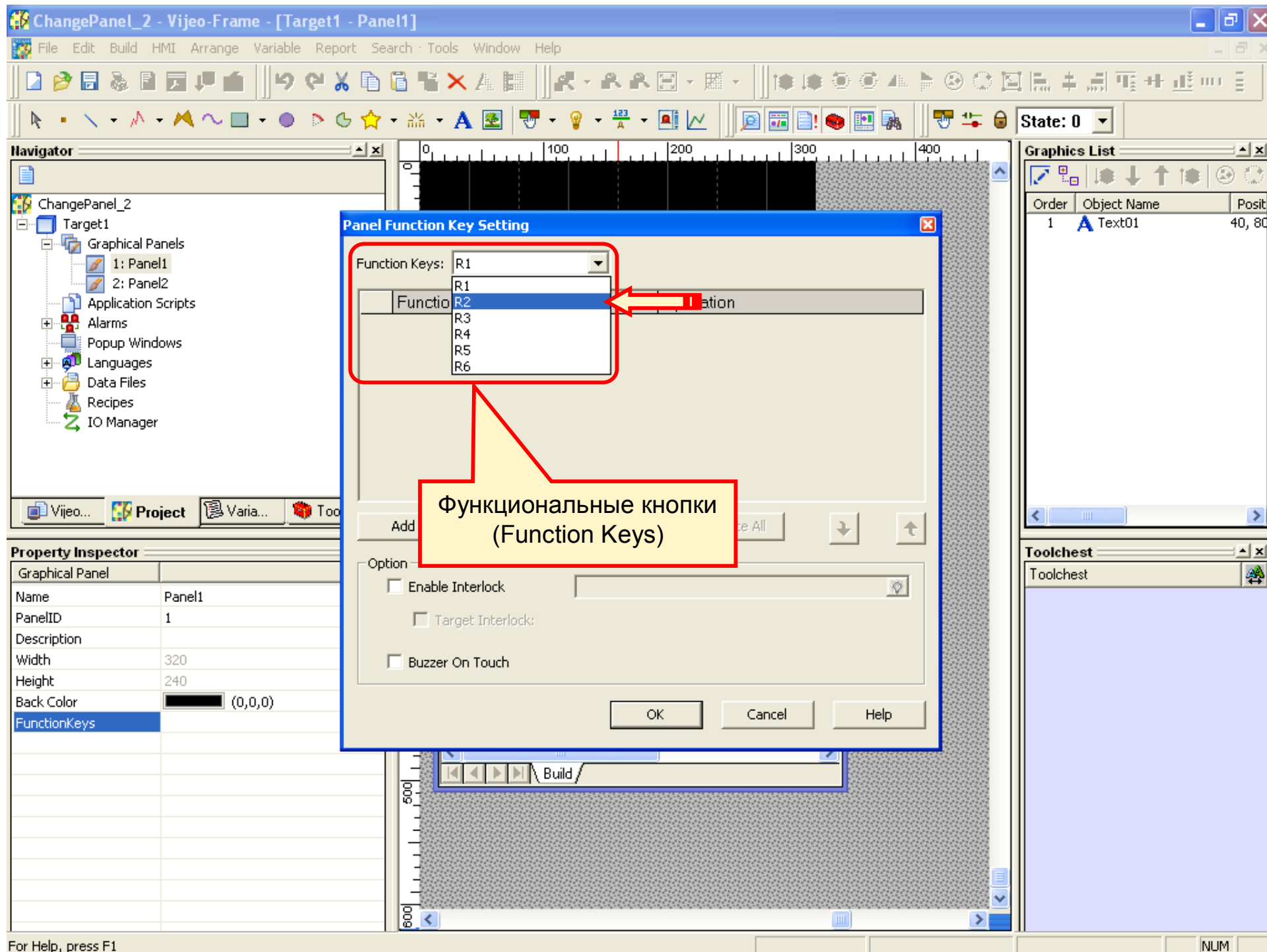
Order	Object Name	Posit
1	A Text01	40, 80

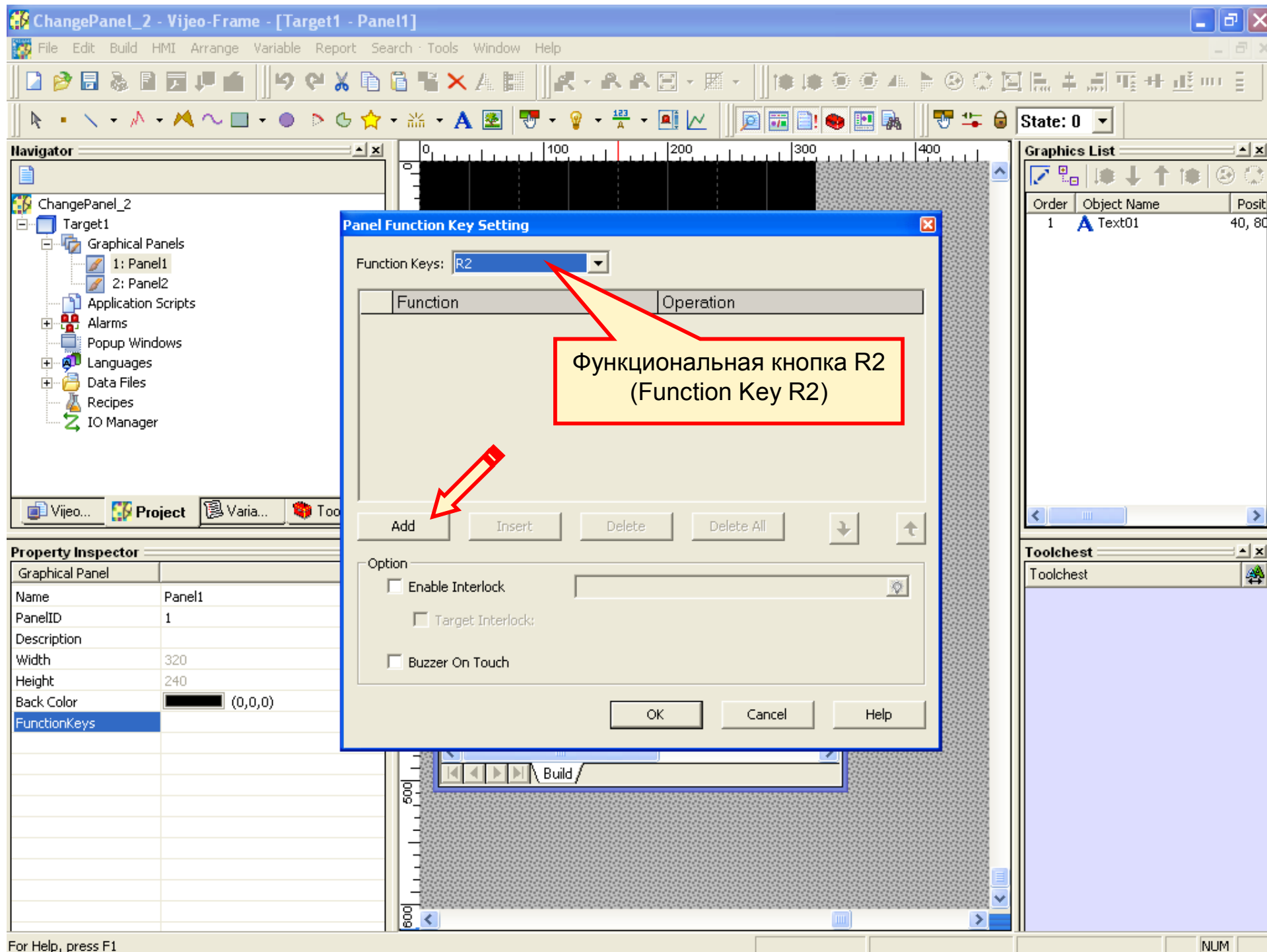
Toolchest

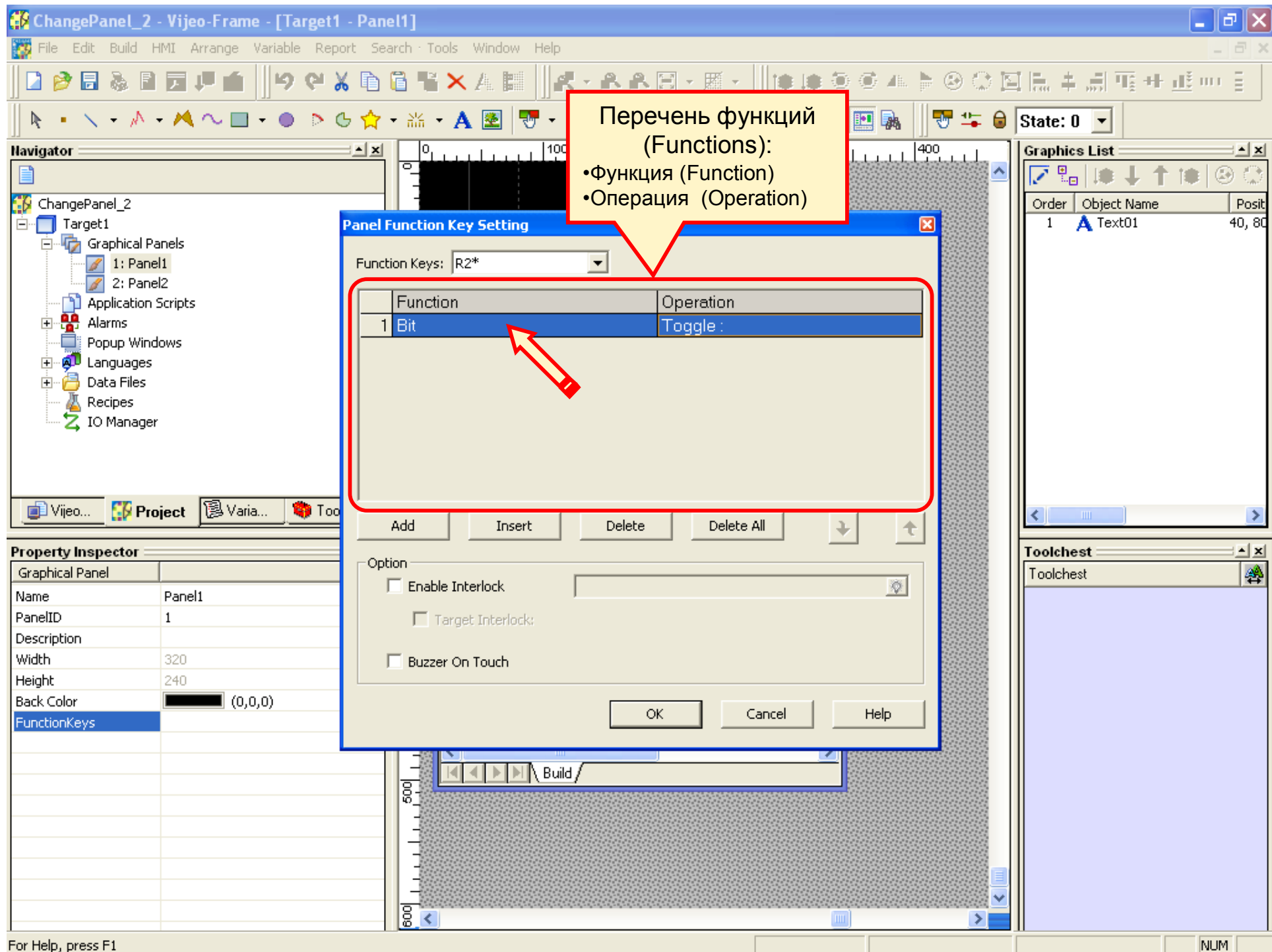
Toolchest

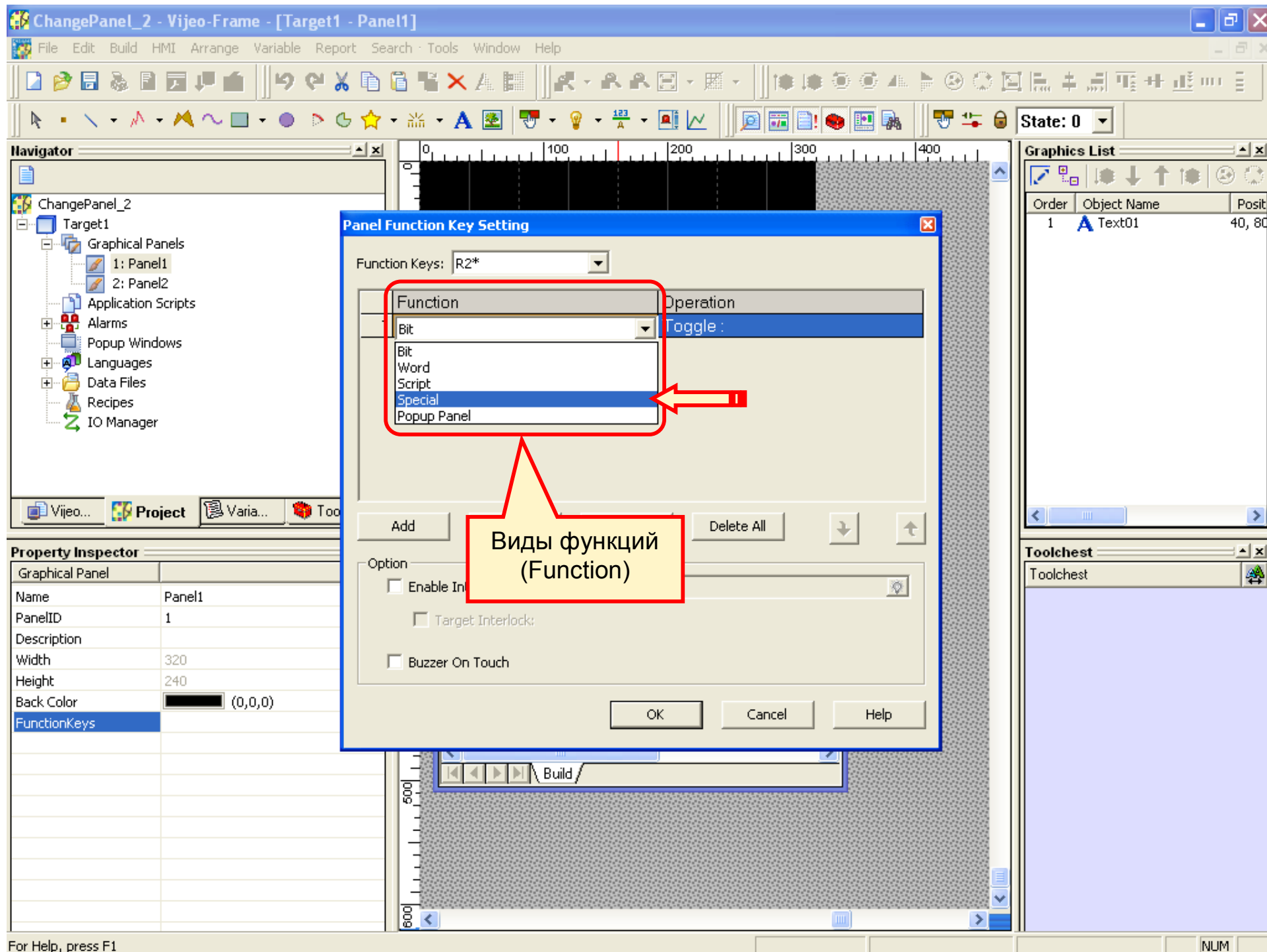
For Help, press F1

NUM









ChangePanel_2 - Vijeo-Frame - [Target1 - Panel1]

File Edit Build HMI Arrange Variable Report Search Tools Window Help

State: 0

Navigator

- ChangePanel_2
 - Target1
 - Graphical Panels
 - 1: Panel1
 - 2: Panel2
 - Application Scripts
 - Alarms
 - Popup Windows
 - Languages
 - Data Files
 - Recipes
 - IO Manager

Property Inspector

Graphical Panel	
Name	Panel1
PanelID	1
Description	
Width	320
Height	240
Back Color	(0,0,0)
FunctionKeys	

Panel Function Key Settings

Function Keys: R2*

Special

- ☒ Previous Panel
- ☐ Restart Runtime
- ☐ Exit Runtime
- ☐ Configuration
- ☐ PlaySound Configure
- ☐ StopSound
- ☐ Change Panel
- ☐ Change Language (Runtime system)
- ☐ Change Language (User application)

OK Cancel

OK Cancel Help

Graphics List

Order	Object Name	Posit
1	A Text01	40, 80

Toolchest

Toolchest

Build

For Help, press F1

NUM

ChangePanel_2 - Vijeo-Frame - [Target1 - Panel1]

File Edit Build HMI Arrange Variable Report Search Tools Window Help

State: 0

Navigator

- ChangePanel_2
 - Target1
 - Graphical Panels
 - 1: Panel1
 - 2: Panel2
 - Application Scripts
 - Alarms
 - Popup Windows
 - Languages
 - Data Files
 - Recipes
 - IO Manager

Property Inspector

Graphical Panel	
Name	Panel1
PanelID	1
Description	
Width	320
Height	240
Back Color	(0,0,0)
FunctionKeys	

Panel Function Key Settings

Function Keys: R2*

Special

- ☐ Previous Panel
- ☐ Restart Runtime
- ☐ Exit Runtime
- ☐ Configuration
- ☐ PlaySound Configure
- ☐ StopSound
- ☒ Change Panel
 - 1:Panel1
- ☐ Change Language (Runtime system)
- ☐ Change Language (User application)

OK Cancel

Graphics List

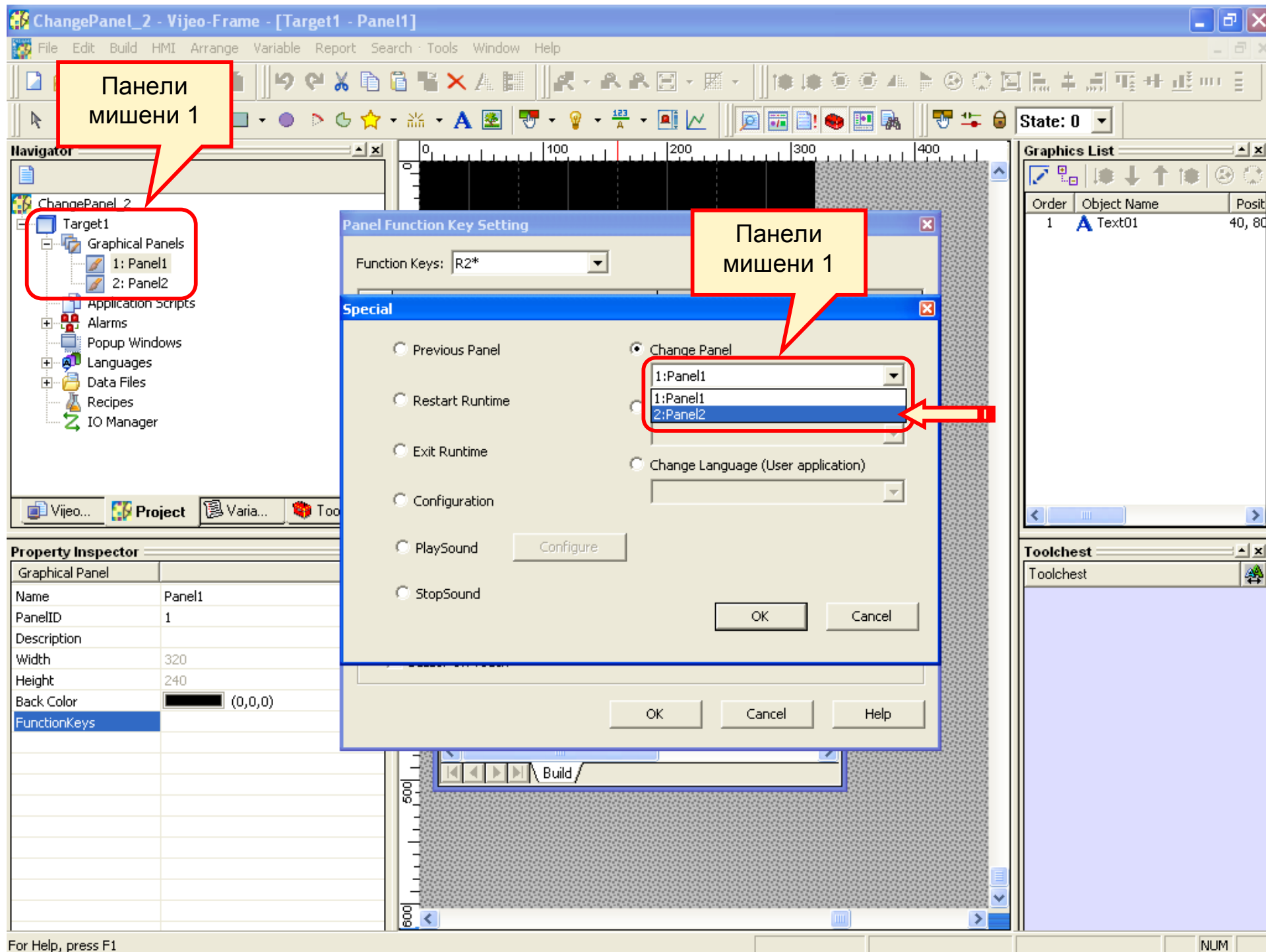
Order	Object Name	Posit
1	A Text01	40, 80

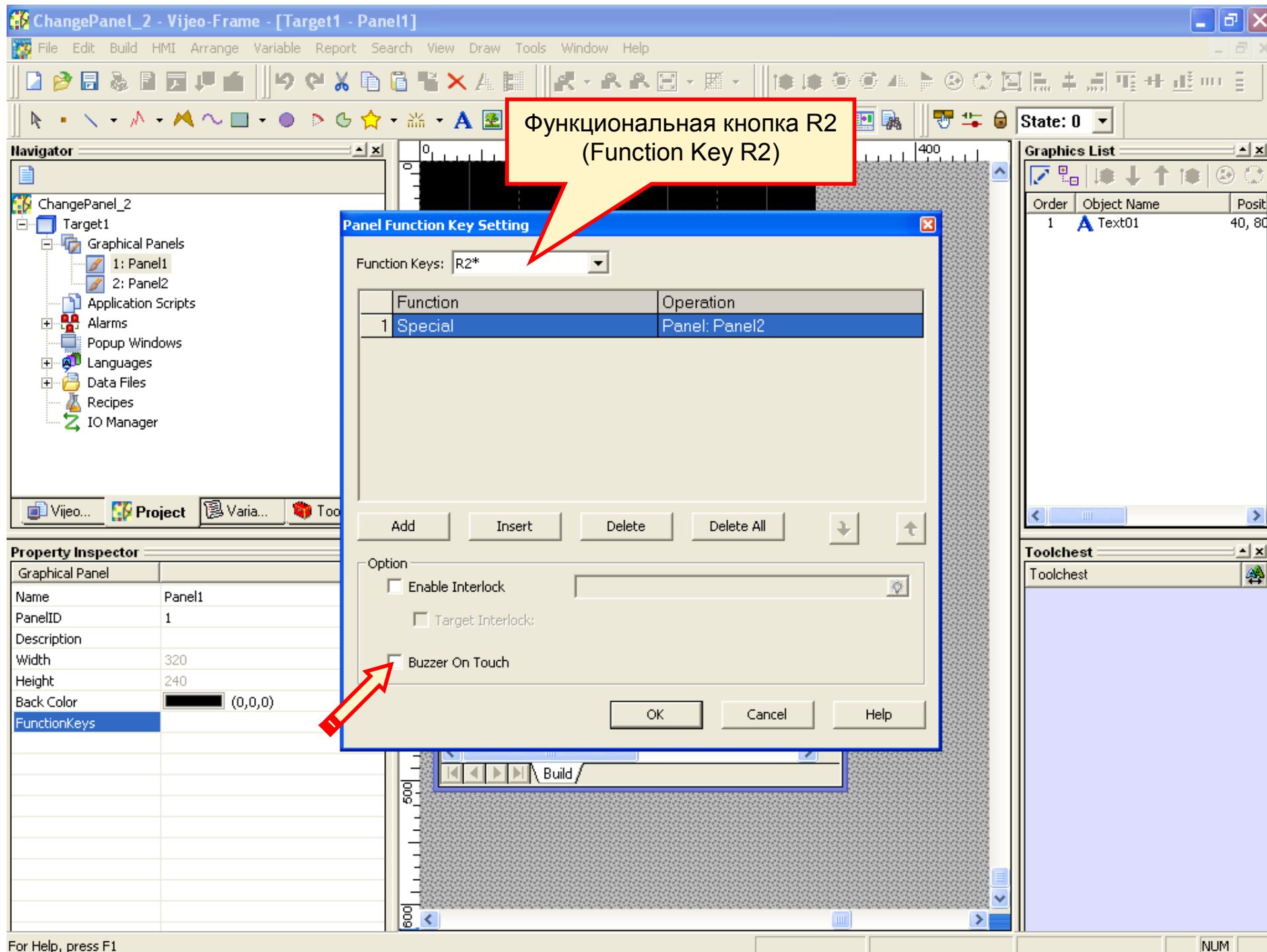
Toolchest

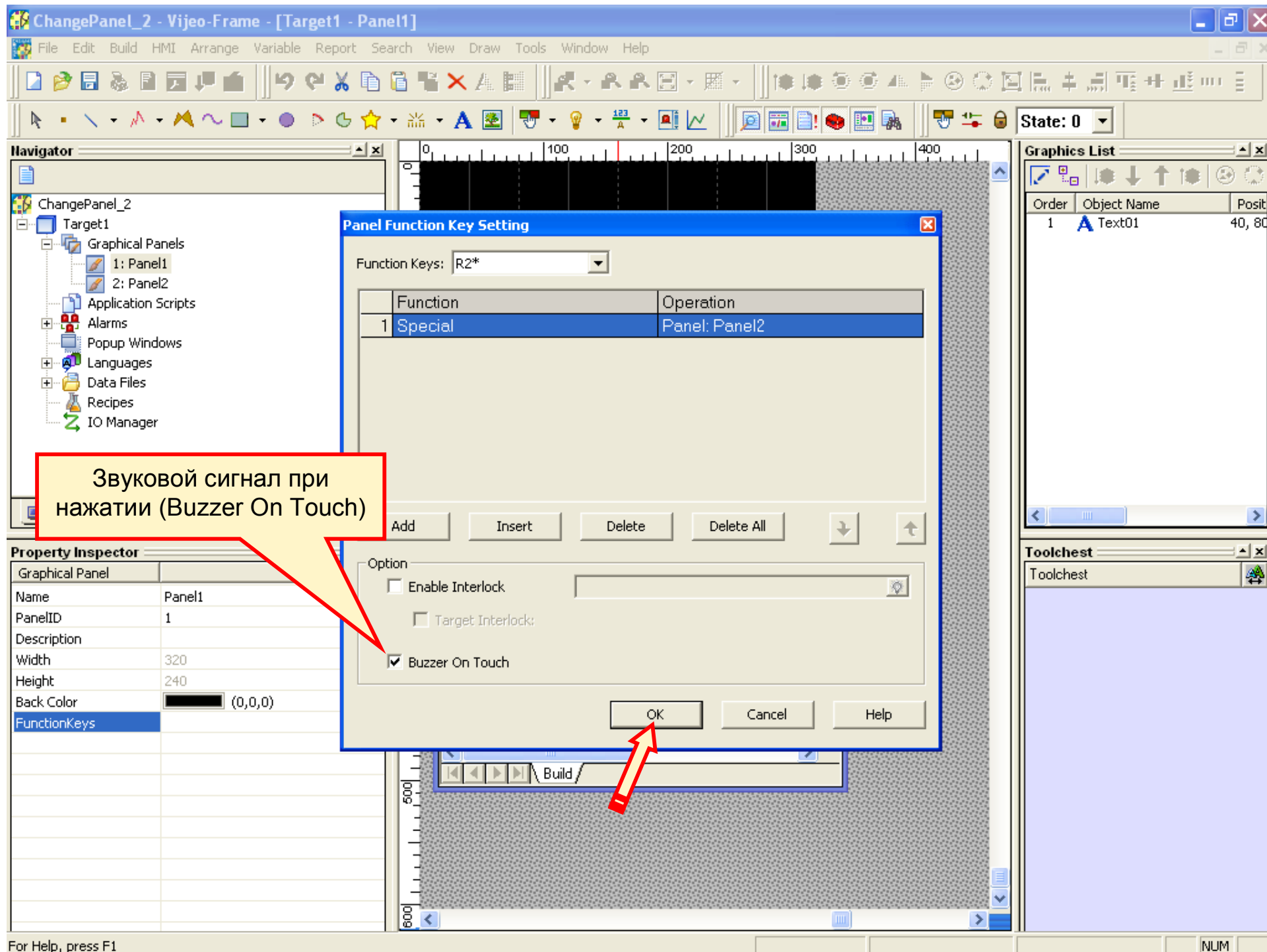
Toolchest

For Help, press F1

NUM







ChangePanel_2 - Vijeo-Frame - [Target1 - Panel1]

File Edit Build HMI Arrange Variable Report Search Tools Window Help

State: 0

Navigator

- ChangePanel_2
 - Target1
 - Graphical Panels
 - 1: Panel1
 - 2: Panel2
 - Application Scripts
 - Alarms
 - Popup Windows
 - Languages
 - Data Files
 - Recipes
 - IO Manager

Graphics List

Order	Object Name	Posit
1	A Text01	40, 80

Property Inspector

Graphical Panel	
Name	Panel1
PanelID	1
Description	
Width	320
Height	240
Back Color	(0,0,0)
FunctionKeys	...

Toolchest

Toolchest

то 1-я панель

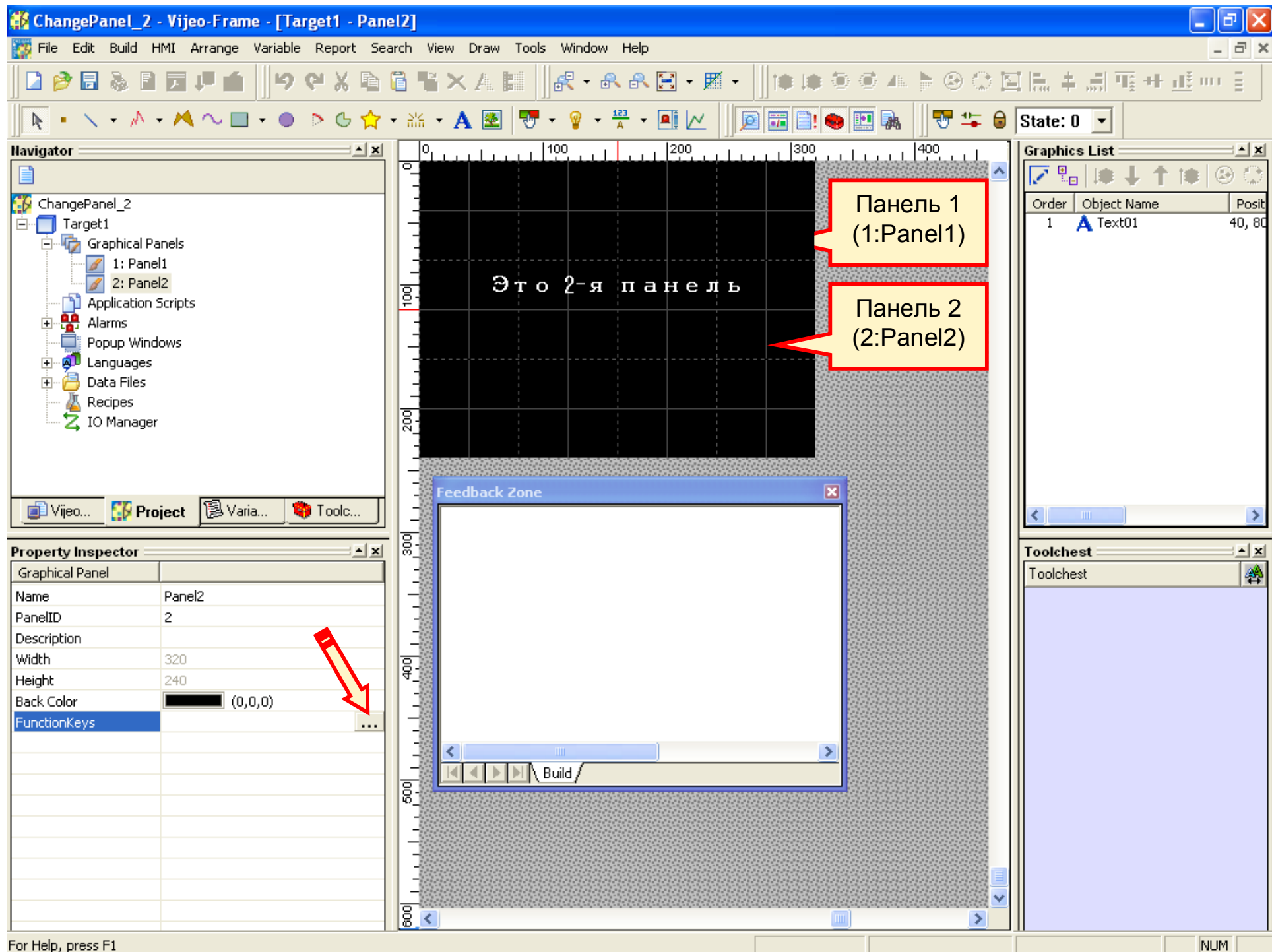
Перейдите на Панель2

Feedback Zone

Build

For Help, press F1

NUM



ChangePanel_2 - Vijeo-Frame - [Target1 - Panel2]

File Edit Build HMI Arrange Variable Report Search Tools Window Help

Установка функциональных кнопок
2-й панели (Panel Function Key Setting)

Navigator

- ChangePanel_2
 - Target1
 - Graphical Panels
 - 1: Panel1
 - 2: Panel2
 - Application Scripts
 - Alarms
 - Popup Windows
 - Languages
 - Data Files
 - Recipes
 - IO Manager

State: 0

Graphics List

Order	Object Name	Posit
1	A Text01	40, 80

Toolchest

Toolchest

Property Inspector

Graphical Panel	
Name	Panel2
PanelID	2
Description	
Width	320
Height	240
Back Color	(0,0,0)
FunctionKeys	

Panel Function Key Setting

Function Keys: R1

Function	Operation
----------	-----------

Add Insert Delete Delete All

Option

☐ Enable Interlock

☐ Target Interlock:

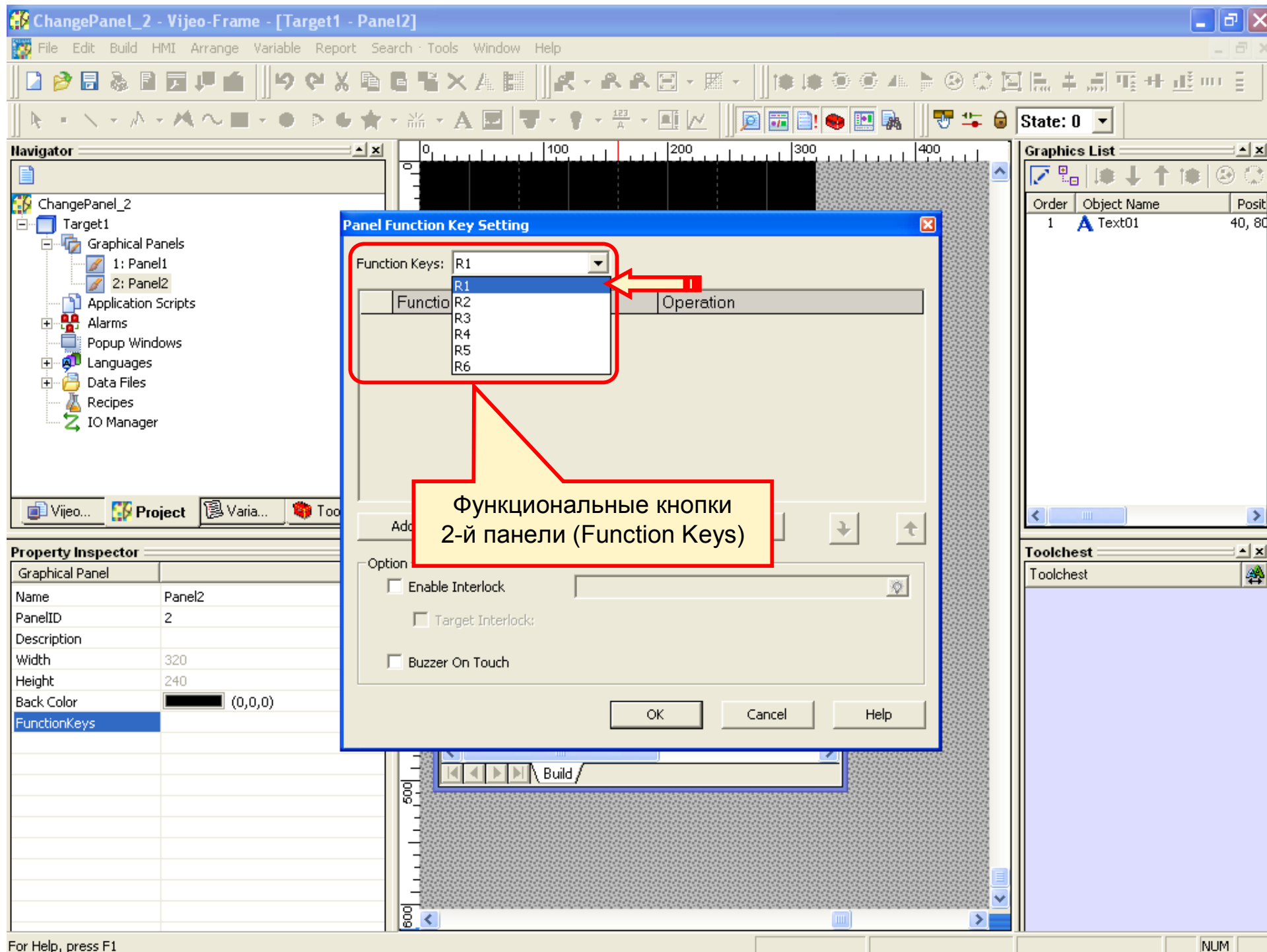
☐ Buzzer On Touch

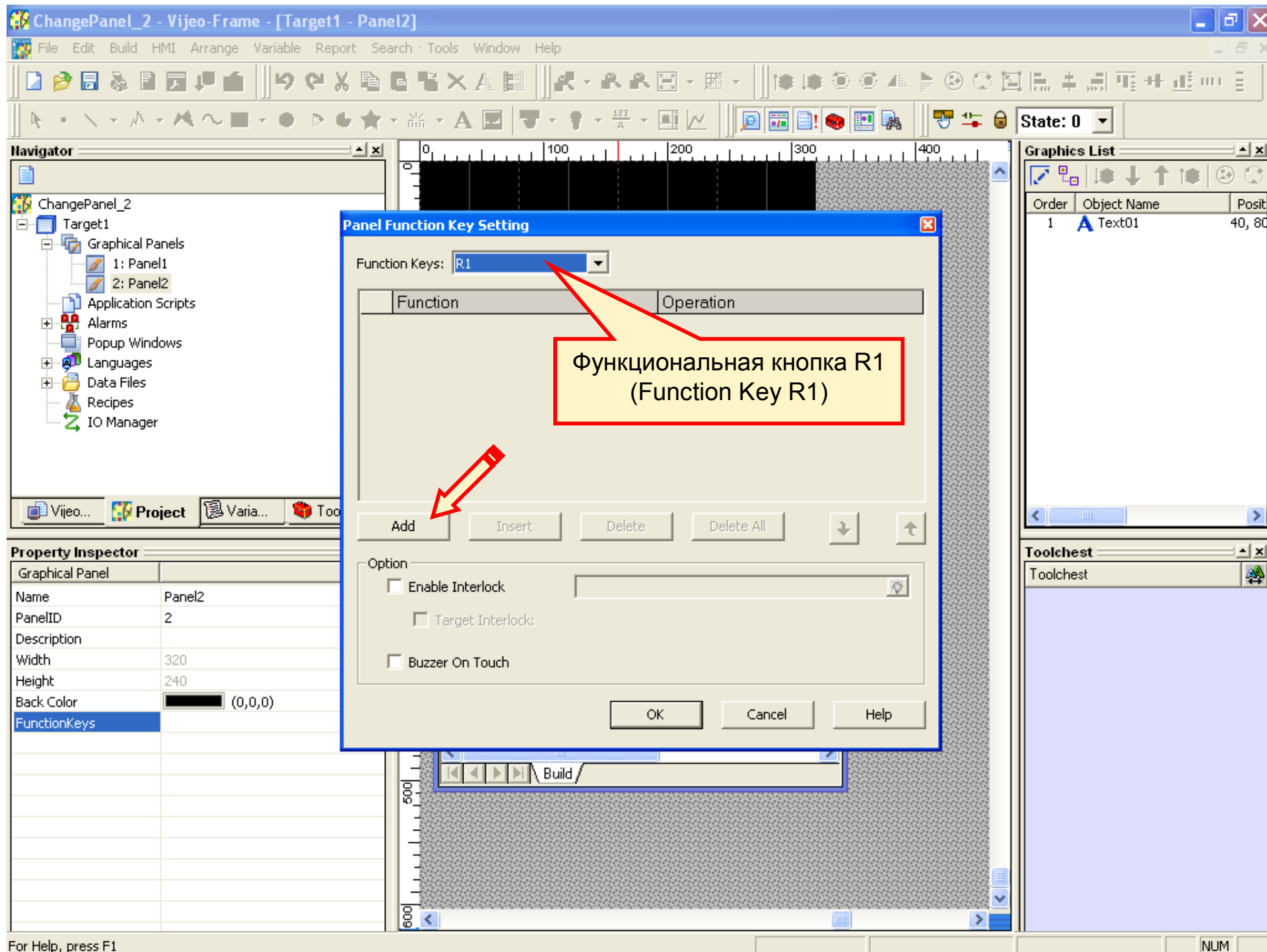
OK Cancel Help

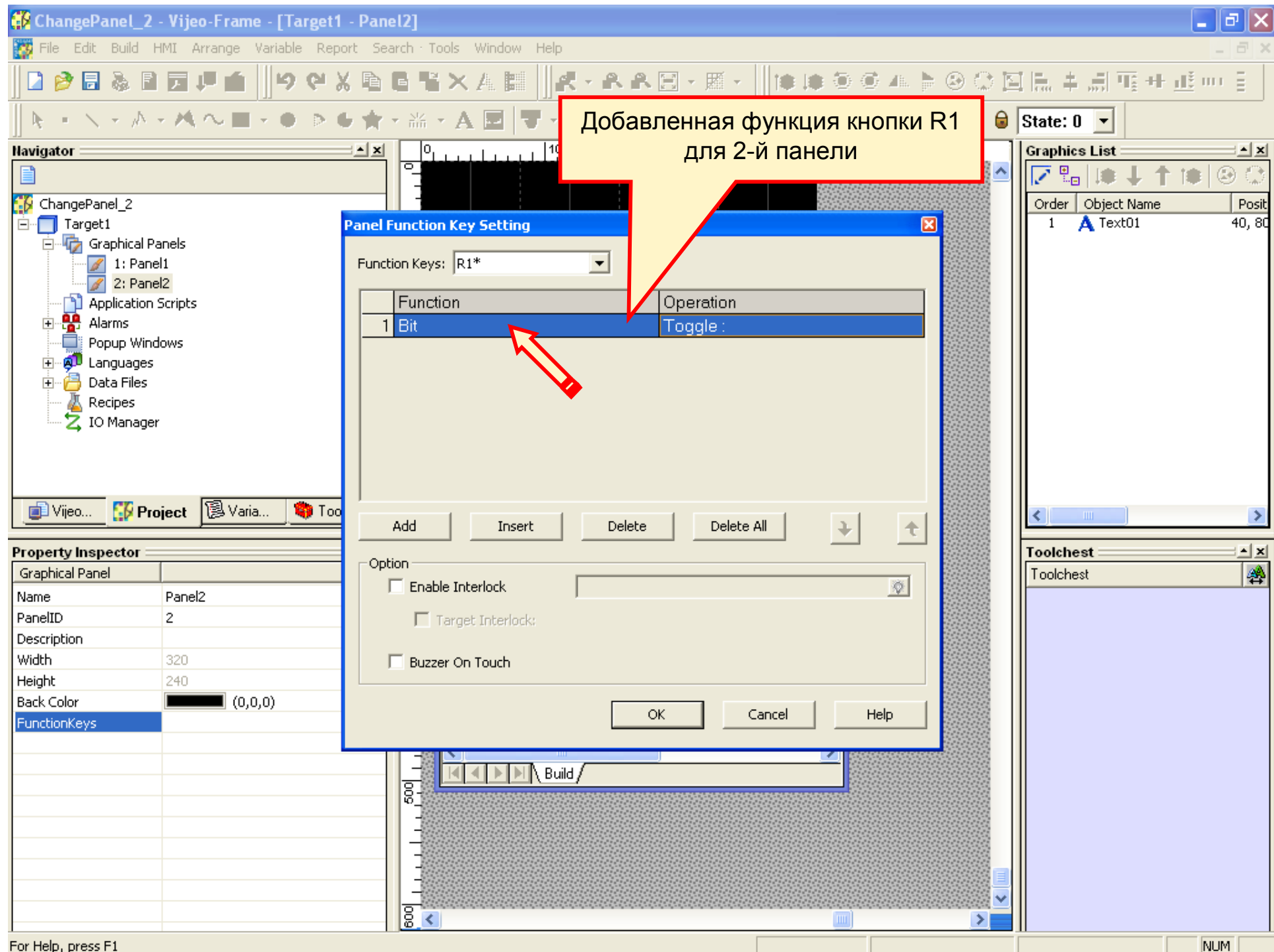
Build

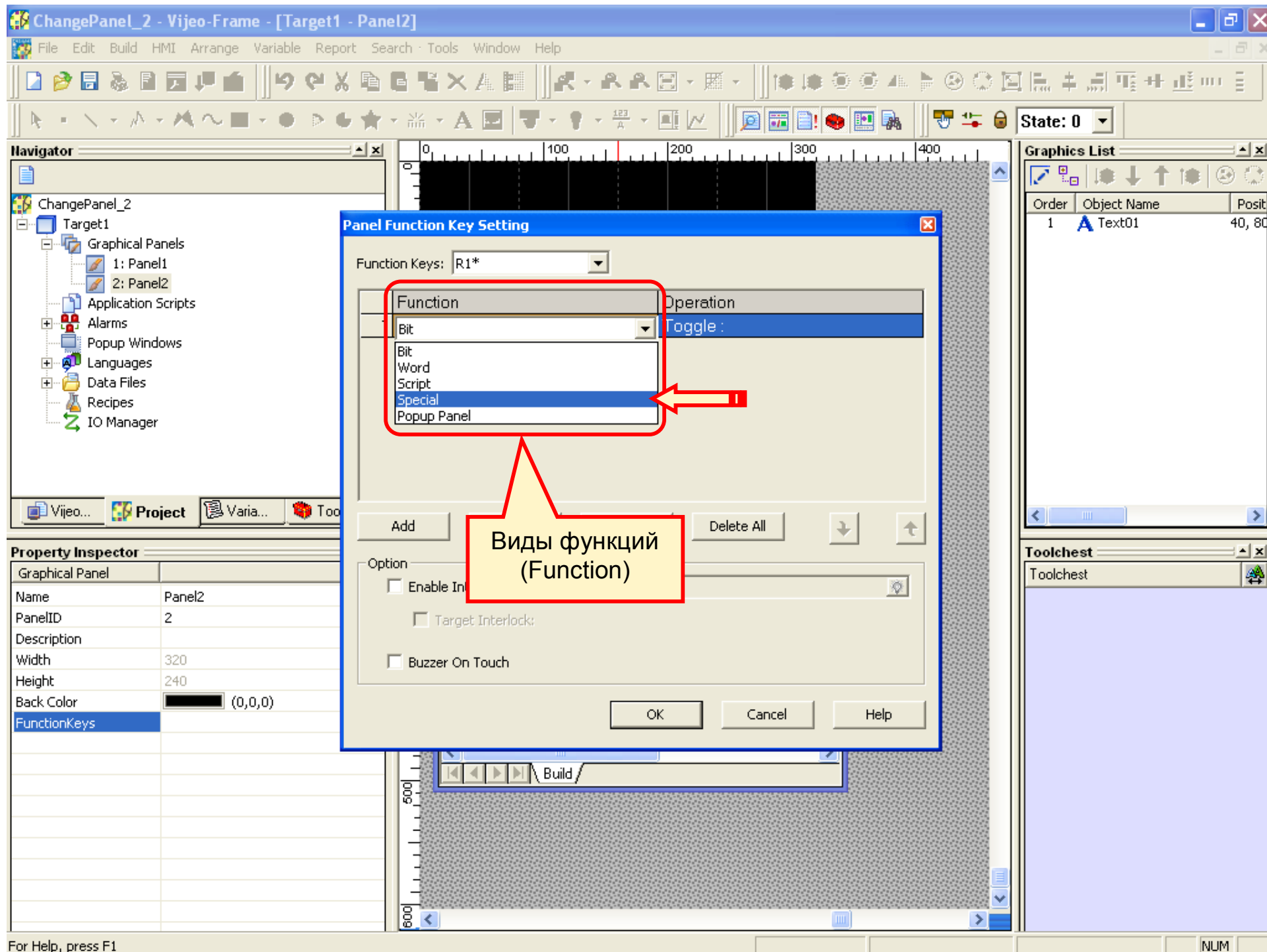
For Help, press F1

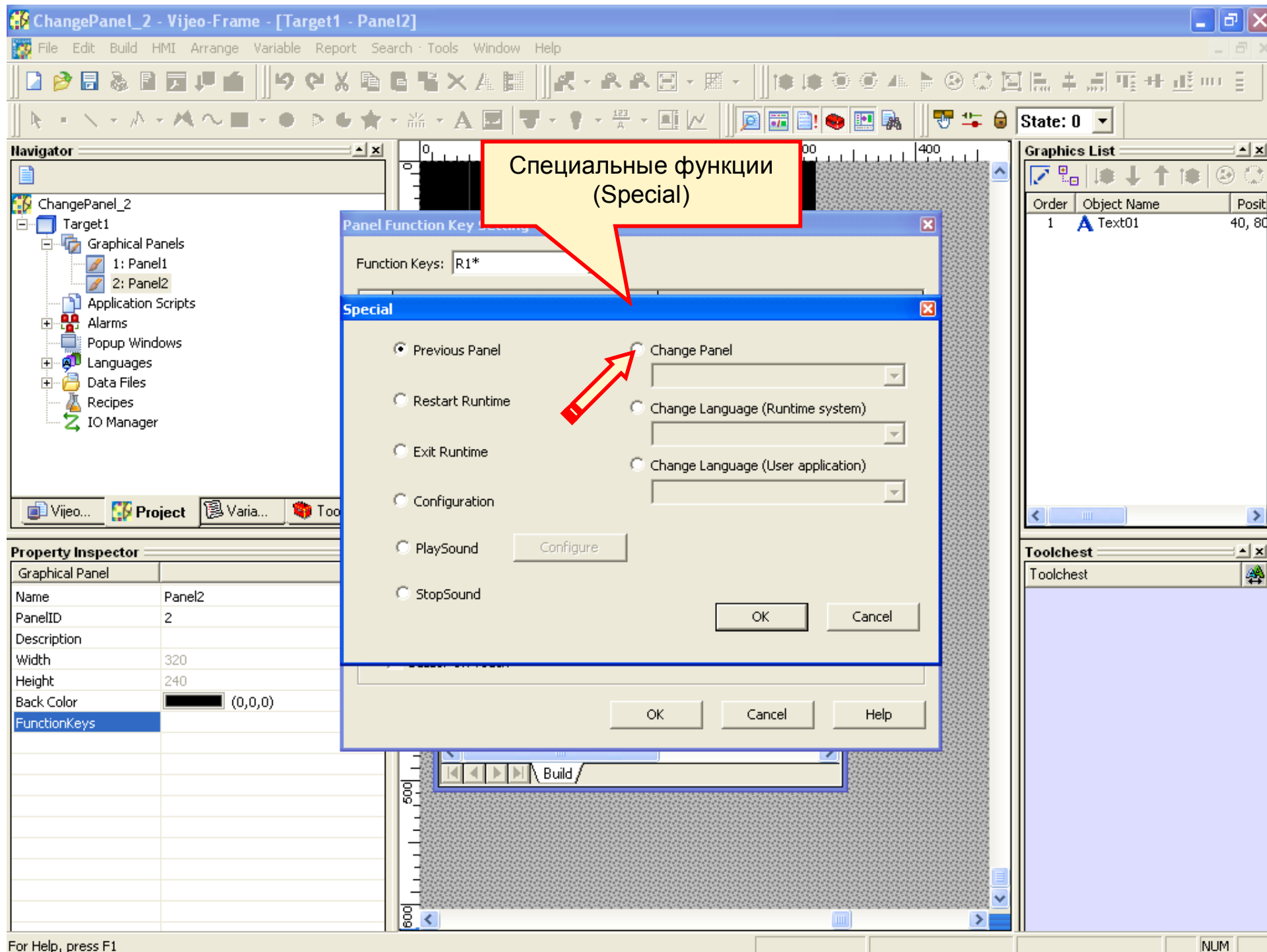
NUM

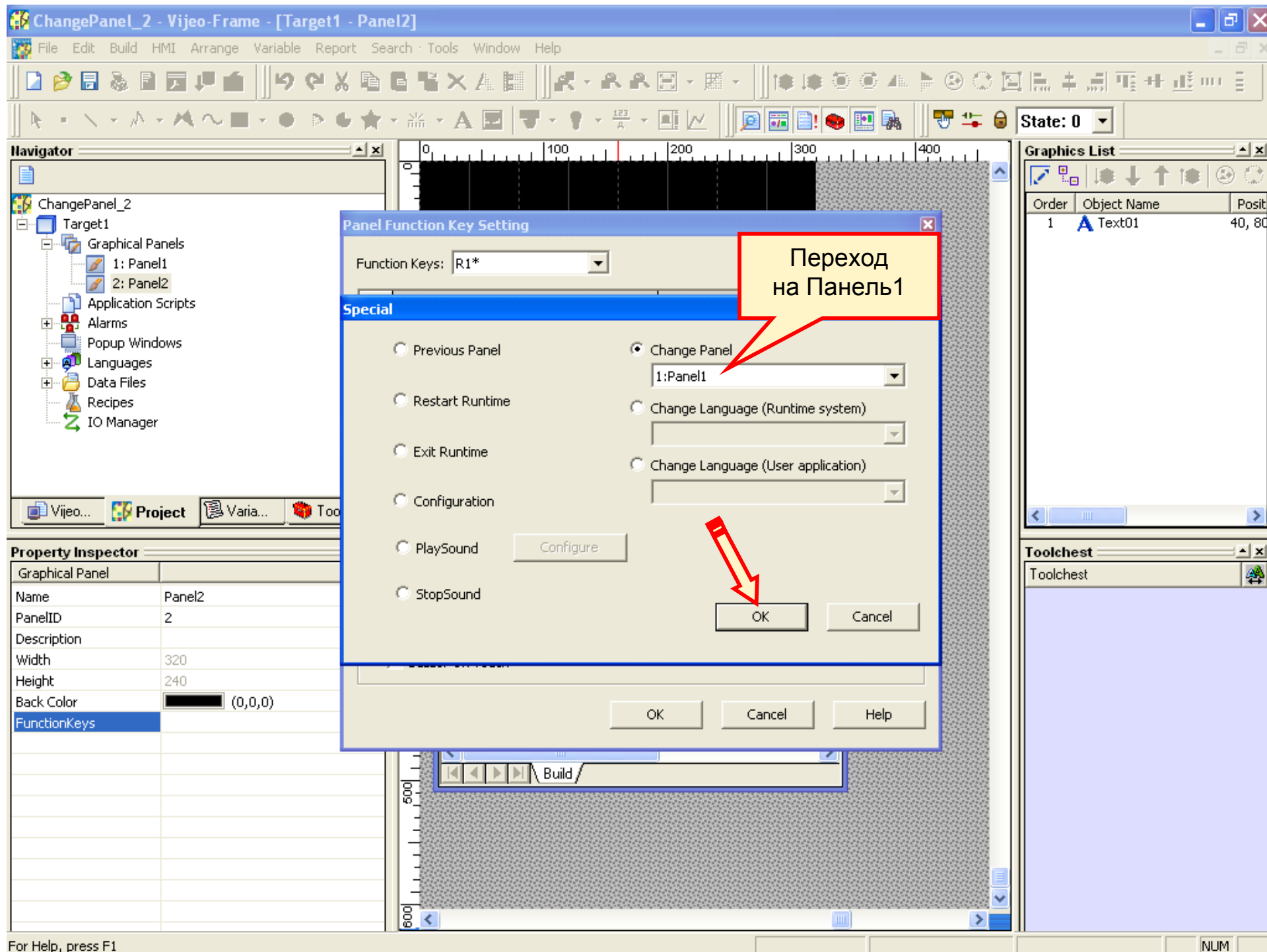


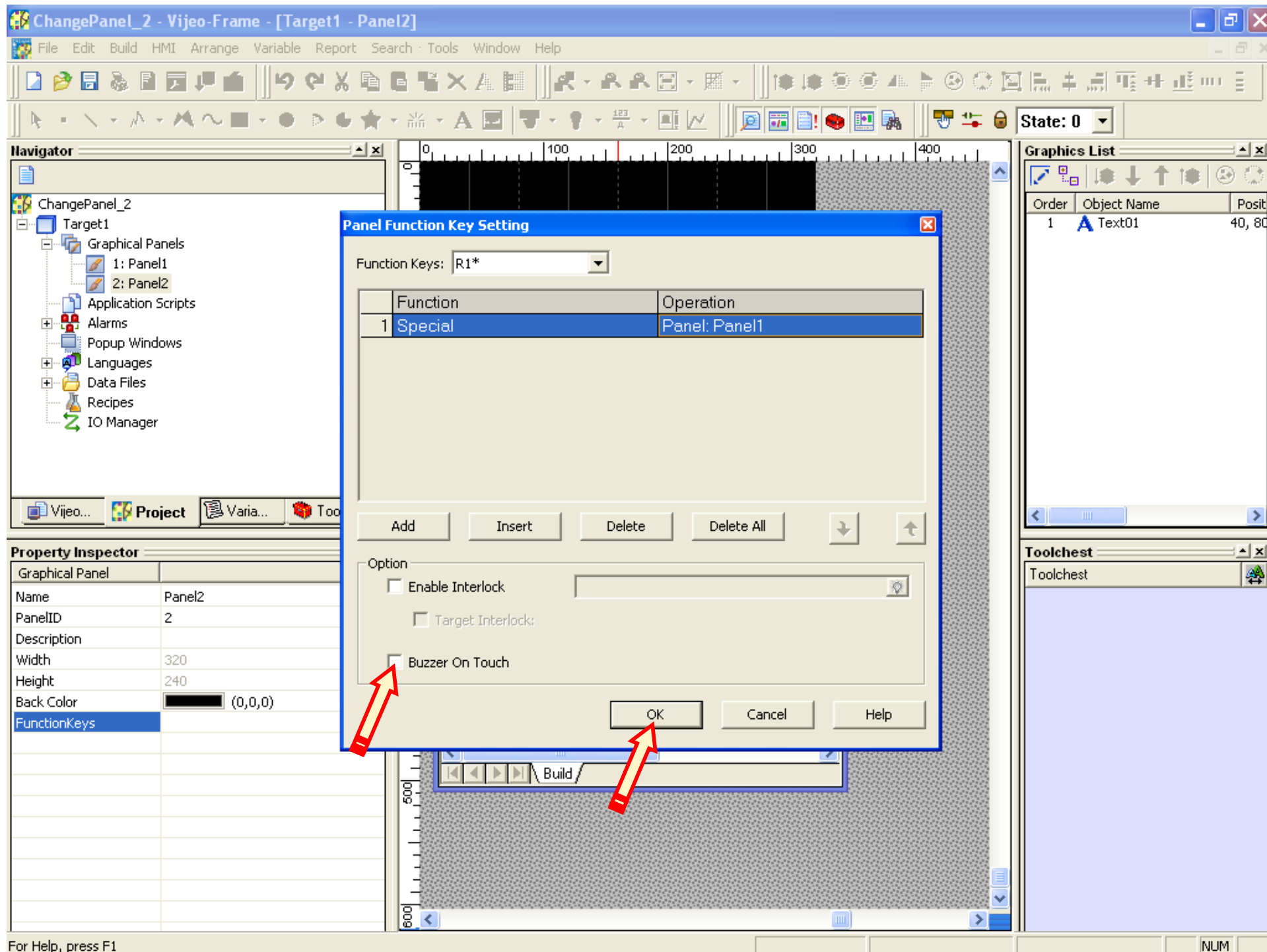












ChangePanel_2 - Vijeo-Frame - [Target1 - Panel2]

File Edit Build HMI Arrange Variable Report Search Tools Window Help

Clean All
Validate All
Build All F7
Clean Target
Validate Target
Build Target
Simulation
Start Device Simulation
Download All
Download Target
Options...

Navigator

- ChangePar
- Target
- Gr
- Ap
- Ala
- Popu windows
- Languages
- Data Files
- Recipes
- IO Manager

Vijeo... Project Varia... Toolc...

Property Inspector

Graphical Panel	
Name	Panel2
PanelID	2
Description	
Width	320
Height	240
Back Color	(0,0,0)
FunctionKeys	...

State: 0

Graphics List

Order	Object Name	Posit
1	A Text01	40, 80

Toolchest

Toolchest

Это 2-я панель

Загрузите и проверьте проект

Build

Downloads the Project to the targets

NUM

Работа над проектом
завершена.

Выполните практическое
задание:

- Создайте проект, содержащий три панели с надписями «Панель 1», «Панель 2», «Панель 3».
- Обеспечьте возможность переключения панелей с помощью функциональных кнопок:
R1 – Панель 1;
R2 – Панель 2;
R3 – Панель 3.